

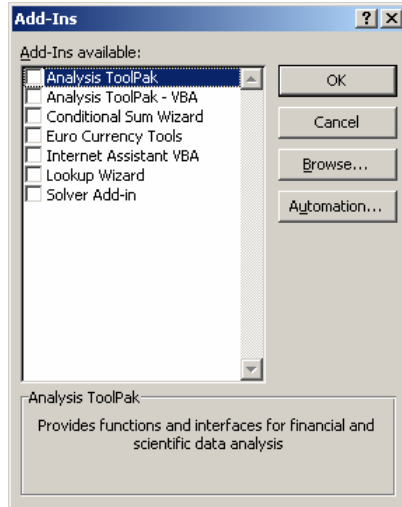
## **Excel Add-in: ISO 8583 Decoder**

## ISO 8583 Decoder Excel Add-in

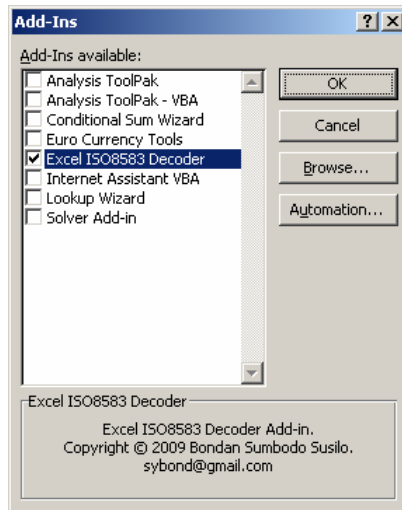
This macro will enable Microsoft® Excel to extract data element from plain ISO 8583-1 : 1987 encoded text format.

### How to install (Office 2003)

1. Download ISO8583Decoder.xla from <http://sybond.web.id/project> and save to your local PC
2. In Microsoft® Excel, select Tools | Add-Ins



3. Click Browse, and select downloaded ISO8583Decoder.xla in your local PC directory
4. New add-in called "Excel ISO8583 Decoder" appear in the list



5. Click OK button, add-in is ready to use

## Using Decoder

After you successfully installed the add-ins you can use new function called **DECODE**. Following is syntax for DECODE function:

```
=DECODE([ISO 8583-1:1987 Text],[Bit Number to Extract*])
```

Or

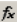
```
=DECODE([ISO 8583-1:1987 Text];[Bit Number to Extract*])
```

\*If Bit Number to Extract is 0, the function will return Message Type Information of current ISO8583 text.  
If value is 1 the function will return Bitmap.

### Example:

```
=DECODE("08008220000000000000000040000000000000000810025924009272001";1)
```

Above function will return "0400000000000000". Or you can also use the function using cell address as the input.

	A2	 =decode(A1;1)
		A
1		08008220000000000000000040000000000000000810025924009272001
2		0400000000000000
3		
4		
5		